

# Mapping Military Training and Occupations Part 1

American Council on Education  
College and University Partnerships (CUP)  
2015 Webinar Series: Credit for Prior Learning  
June 16, 2015

# Technical Information

- **Tech Support:** For technical assistance dial **(202) 939-9700**.
- **Q&A:** We will be responding to your questions throughout the webinar. To ask a question type it into the Q&A panel on the lower right side of your screen and submit to Host.
- **You can hear audio for this webinar two ways:**
  - **Audio Broadcast:** You will automatically be connected to the audio broadcast by joining the webinar. Please make sure your volume is turned on and adjusted to an audible level.
  - **Teleconference:** You may call in to hear the audio by telephone. All telephone lines have been muted. To join via telephone dial **(877) 668-4490** and then enter access code/meeting number: **621 527 253**
- **Archive:** This webinar is being recorded. The recording will be available within 14 business days of the conclusion of this event.

# INTRODUCTIONS



**Moderator: Kathryn Snead**  
**Director**  
**Servicemembers Opportunity Colleges (SOC)**



**Lisa Ferris-McCann**  
**Director of Emergency Medical Services and**  
**Veteran Health Career Programs**  
**Lansing Community College**



**Bridget Petzold**  
**Regional Liaison—South, College & University Partnerships**  
**Center for Education Attainment and Innovation**  
**American Council on Education**



**Gina Sobania**  
**Director, Military, Veteran and Adult Learner Services**  
**Minnesota State Colleges and Universities (MnSCU)**

# Agenda

- **Introduction Slides**
- **Polling Questions**
- **Program Overviews**
- **Panel Discussion**
- **Wrap Up Q&A and Contact Info**

# Polling Questions

**Please respond to the polling  
questions visible  
on the right side of your screen.**

# PROGRAM OVERVIEWS

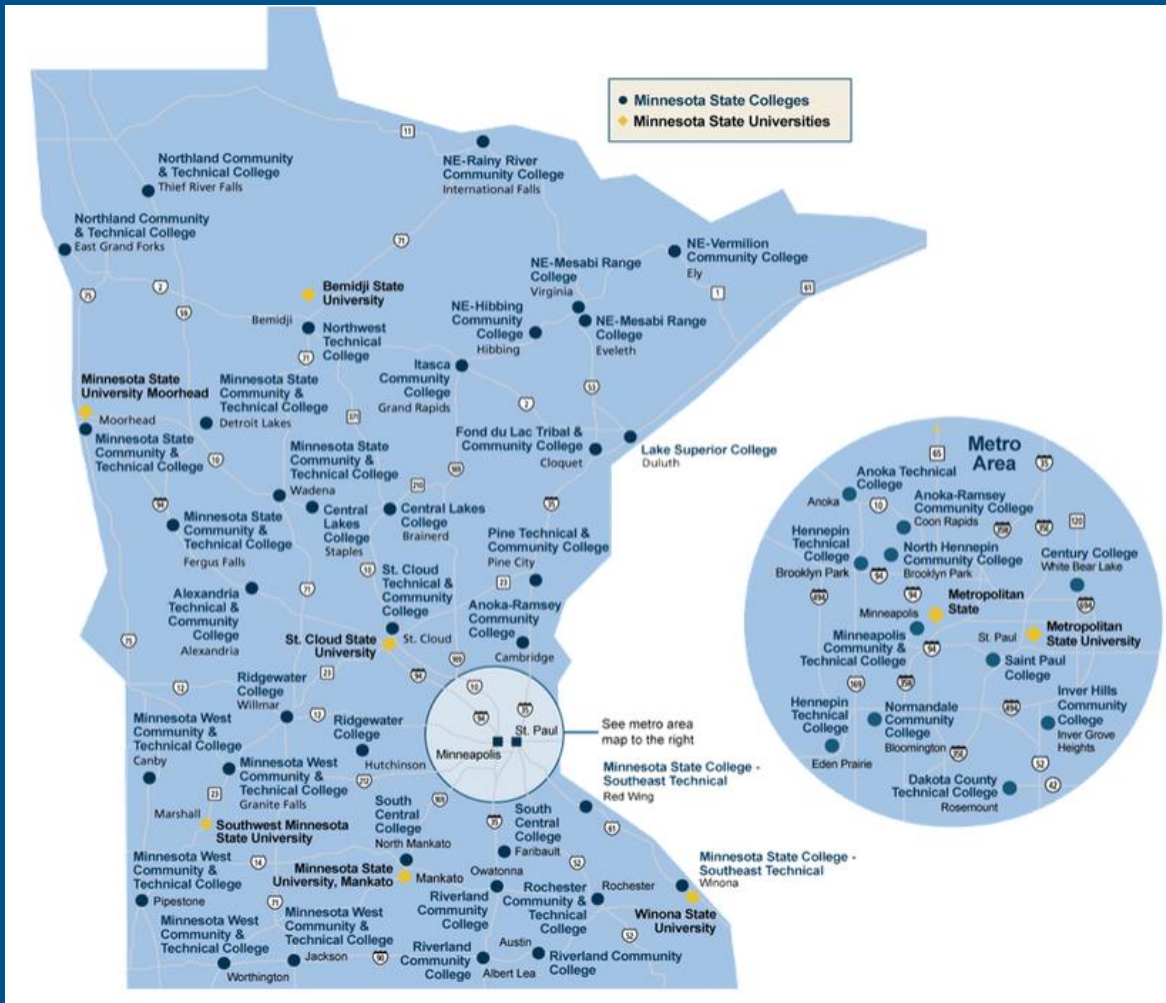
# Lansing Community College

- Michigan's 3<sup>rd</sup> largest among the 28
- Serves more than 20,000 students a year
- First to develop accelerated program for military medic veterans and active duty military medics
- Named a Military Friendly School in 2012
- Nationally accredited since 1992.  
First program in Michigan.
- 75% of the region's allied health professionals received their training at LCC.





# Minnesota State Colleges and Universities



# ACE Regional Liaison Mapping Projects



University System of Georgia  
Creating A More Educated Georgia

TECHNICAL COLLEGE  
**TCSG**  
SYSTEM OF GEORGIA



Illinois Network for Advanced Manufacturing



**Kathy Snead, SOC  
Moderator**



**Lisa Ferris-McCann  
Lansing Community College**



**Bridget Petzold  
ACE Regional Liaison**



**Gina Sobania  
MnSCU**

# PANEL DISCUSSION

**Tell us about the mapping programs  
and why you started them?**

**Why was it important?**

# Historical Journey

- 2001
  - State of Michigan Project MOVE
  - An effort to connect highly trained veterans without formal academic credentials with employers and educators

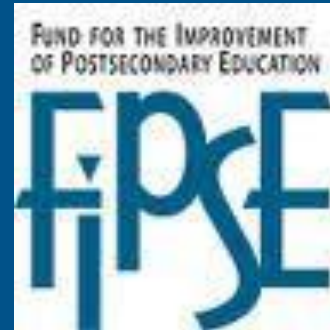


# In the Beginning...2008

- **Education on...**
  - **State Statutes**
  - **MnSCU Policy and Procedure**
  - **Military Branches**
    - **Military Liaison Officer**
  - **ACE Evaluation**



# Maps to Credentials: Partners



**How did your institution  
decide where to start  
with military occupations?**



# Winnowing the Research

- Identify credits awarded to current or former military students
- Identify the relevant MOS's
- Use ACE Recommendations

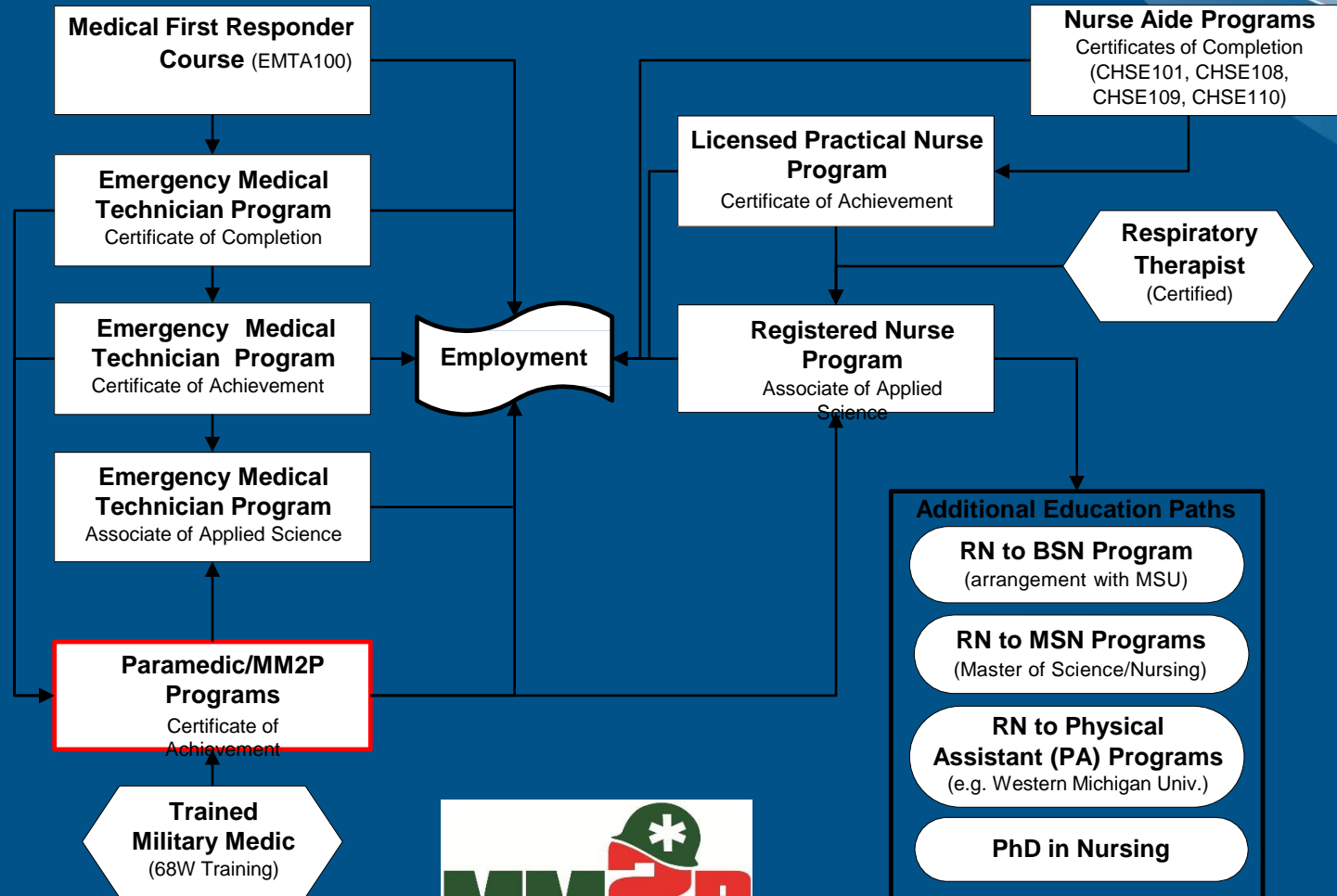


# Showing opportunities to Servicemembers through a widely accessible VETS database



1. Display “one-by-one decisions” made in the regular transfer process
2. Complete “military occupation reviews” in partnership with the Minnesota National Guard and college faculty in related programs
  - 31B - Military Police
  - 42A - Human Resource Specialist
  - 63B - Light Wheel Vehicle Mechanic
  - 68W - Health Care Specialist
3. Trigger an “occupational evaluation request” based on inquiries from Servicemembers and Veterans

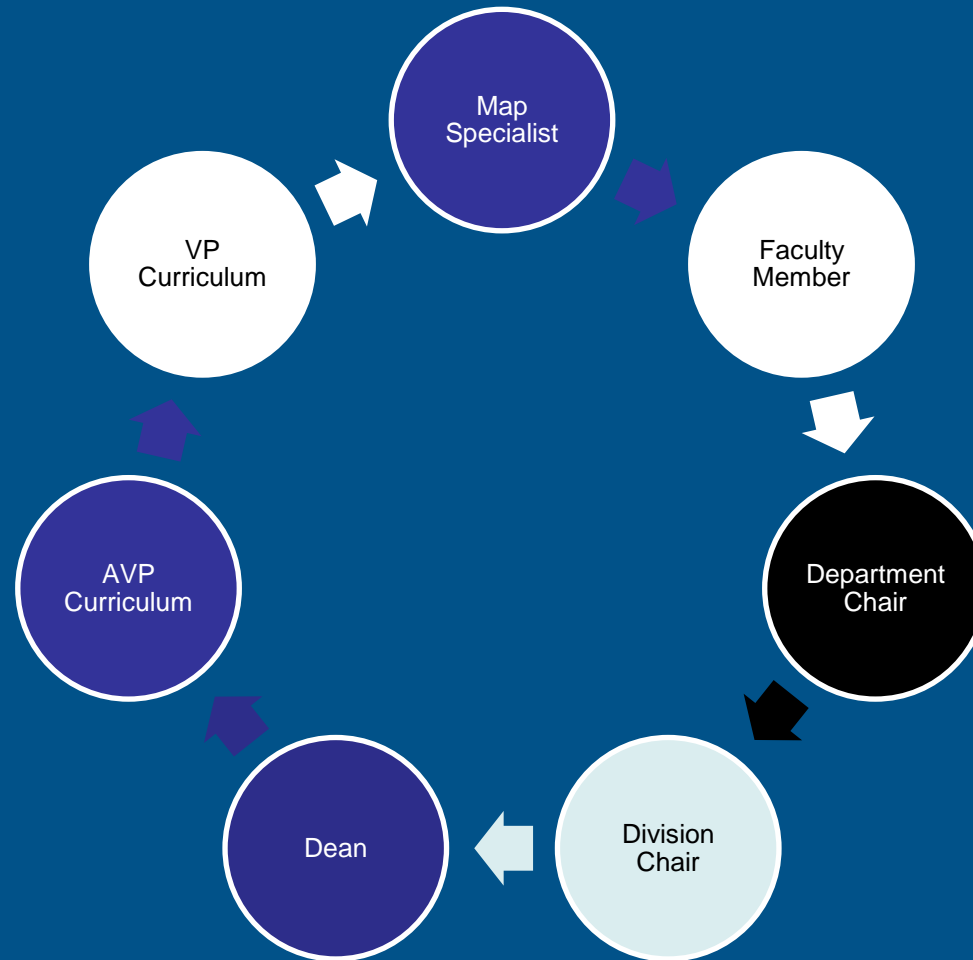
# Stackable Programs



**How are faculty involved  
in the mapping?**

**How do institutions get buy-in?**

# Engage the Faculty



# Serve as an Evaluator

- You must be actively teaching college-level courses.
- When your discipline expertise is needed, you are contacted directly to serve on the ACE team.
- ACE pays all evaluators an honorarium and travel.



[www.acenet.edu/evaluators](http://www.acenet.edu/evaluators)

[evaluator@acenet.edu](mailto:evaluator@acenet.edu)

# Contact Information

## ACE's College and University Partnerships CUP

[www.acenet.edu/cup](http://www.acenet.edu/cup)

[cup@acenet.edu](mailto:cup@acenet.edu)

# EVALUATION SURVEY

Please complete the evaluation survey  
at the end of this webinar.





**THANK YOU FOR  
PARTICIPATING!**